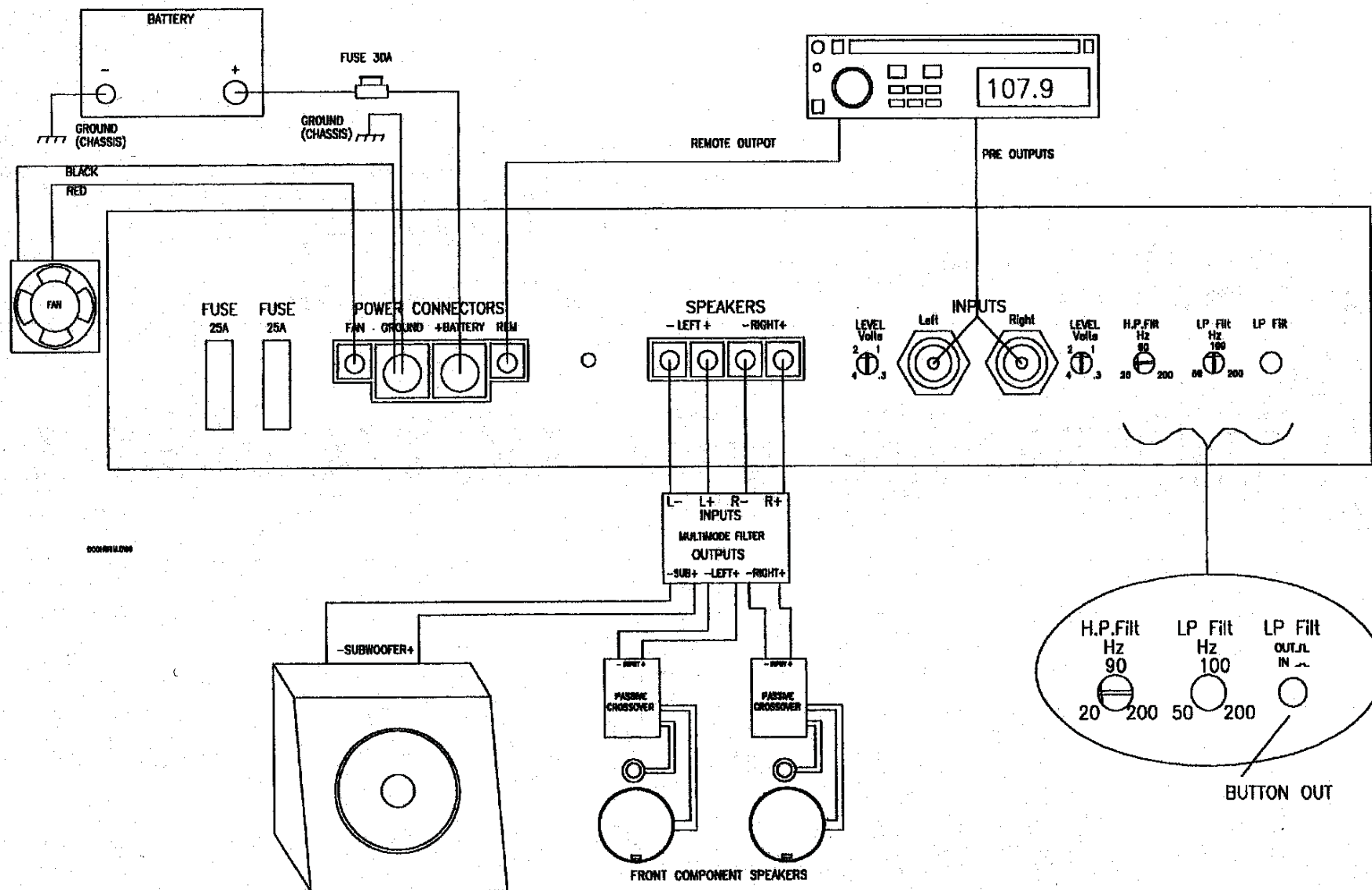


**Dual Mono**

**Diagram 3 - Front Stage & Subwoofer using Multimode filter**

- 1) For input level setting procedure, refer Section 5.
- 2) Select Button Out position on low pass filter switch. High pass filter setting as shown.
- 3) Speakers may be coaxial (with or without separate crossovers), or 2/3 way Component systems.



**E.B. ACOUSTIC & ELECTRONIC RESEARCH S.R.L.**

Via S. Bartolomeo, 10 - 28047 OLEGGIO (NO) Italy Ph. 0039 0321 91430 - Fax 0039 0321 94411

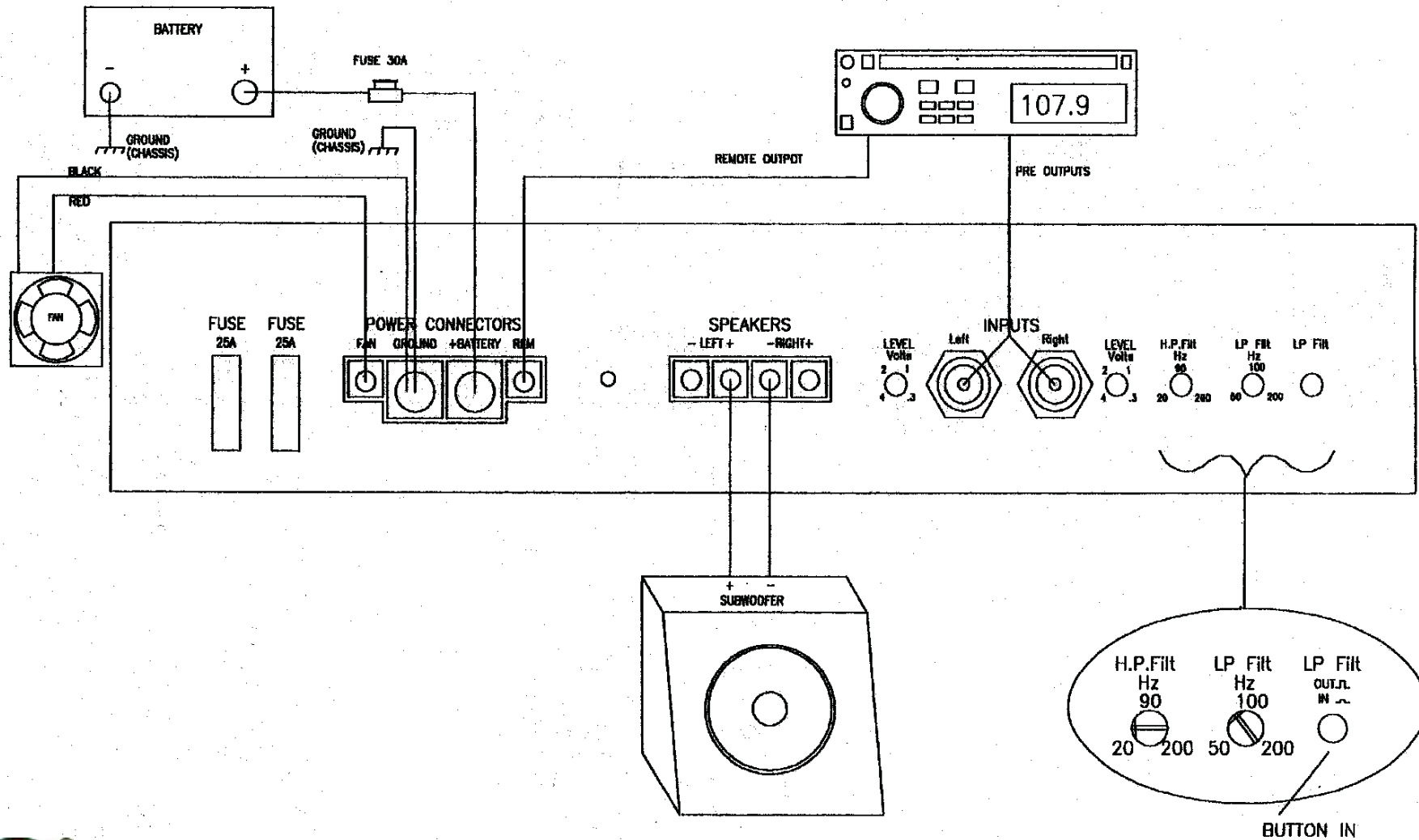
[www.ebacoustic.it](http://www.ebacoustic.it)

### Dual Mono

#### Diagram 2 - Mono (Bridged) Subwoofer Mode

- 1) For input level setting procedure, refer Section 5.
- 2) Select Button in position on low pass filter switch. Adjust low and high pass filter setting as shown.
- 3) Do not use with an impedance load below 4 ohms in this mode. Refer to Section 4.

**Tec**  
Professional Car Audio



E.B. ACOUSTIC & ELECTRONIC RESEARCH S.R.L.

Via S. Bartolomeo, 10 - 28047 OLEGGIO (NO) Italy Ph. 0039 0321 91430 - Fax 0039 0321 94411

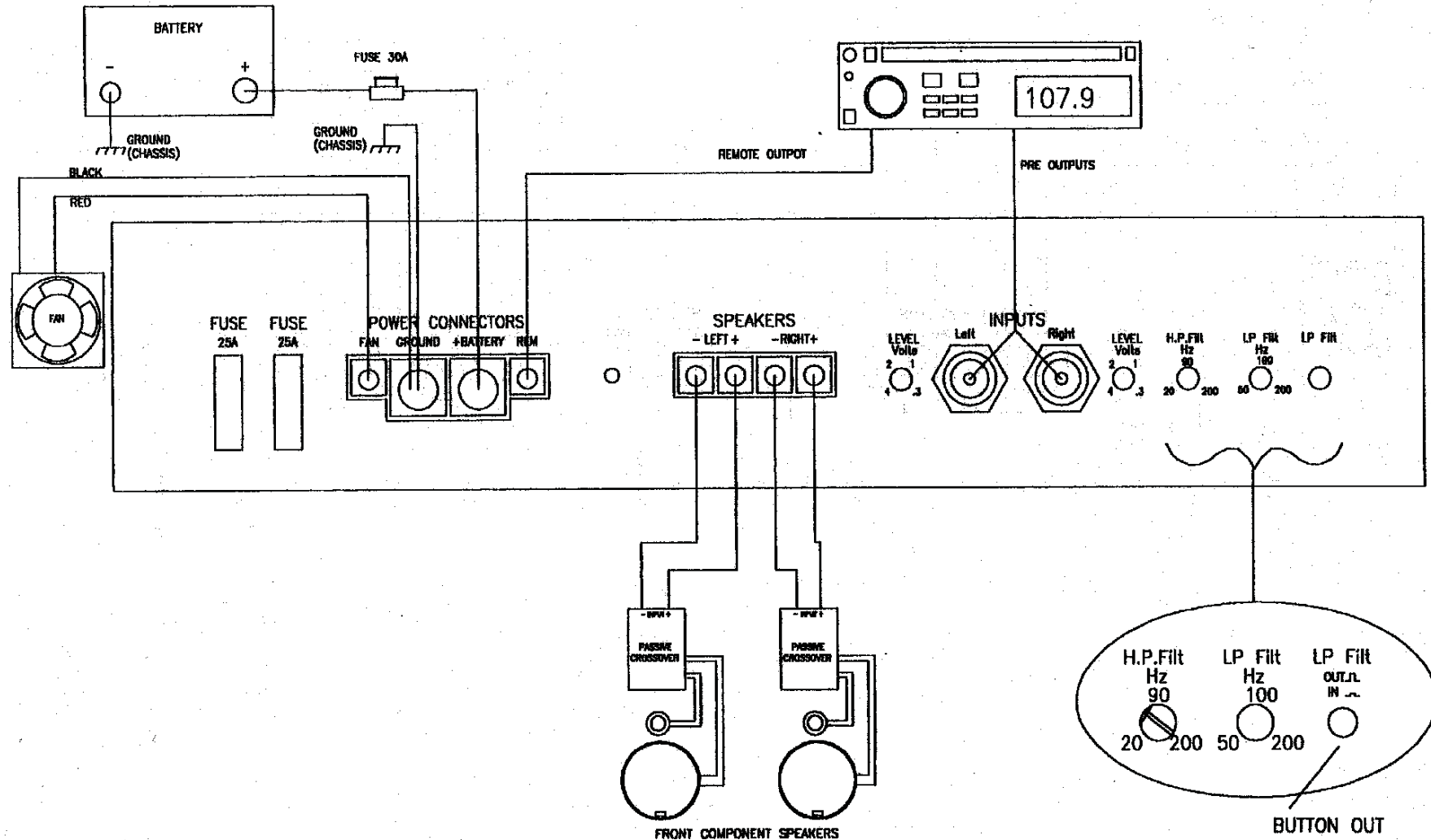
[www.ebacoustic.it](http://www.ebacoustic.it)

### Dual Mono

#### Diagram 1 - Stereo Mode

- 1) For Input level setting procedure, refer Section 5.
- 2) Select Button Out position on low pass filter switch. Adjust high pass filter setting as shown.
- 3) Speakers may be coaxial (with or without separate crossovers), or 2/3 way Component systems.

**Tec**  
Professional Car Audio



**E.B. ACOUSTIC & ELECTRONIC RESEARCH S.R.L.**

Via S. Bartolomeo, 10 - 28047 OLEGGIO (NO) Italy Ph. 0039 0321 91430 - Fax 0039 0321 94411

[www.ebacoustic.it](http://www.ebacoustic.it)