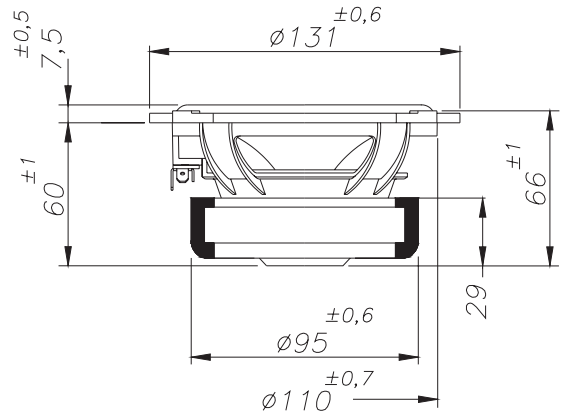
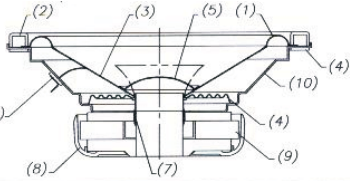


# MID-WOOFER

# SPL 5

- 1 Surround RUBBER material
- 2 Gasket not present
- 3 Cone CARBON FIBER
- 4 Spider CONEX material
- 5 Dust Cap PP injected
- 6 Terminal 6,3x4,8mm
- 7 Voice coil 26x10,6 mm. 2 layers Kapton former
- 8 Magnet system vented 4,8 mm. gap height
- 9 Magnet 86x32x15mm.
- 10 Basket frame Nylon (injected) material



Frequency range	70-10000 Hz
Equivalent volume, Vas	3 L
Compliance, Cms	0,250 mm/N
Mechanical resistance, Rms	0,42 Ns/m
Effective diaphragm/cone area, Sd	75,4 cm <sup>2</sup>
Voice coil diameter	26 mm
Voice coil height	10,6 mm
Air gap height	4,8 mm
Linear excursion, Xmax	± 3 mm
Max mechanical excursion	± 6 mm
Nominal impedance	4 ohm
Voice coil resistance	3,3 ohm
Voice coil inductance	0,17 mH
Free air resonance, Fs	90 Hz
Sensitivity, Spl (1W/1m)	86 dB
Force factor, Bxl	5,1 Tm
Moving mass, Md	11 g
Qms	4,38
Qes	0,82
Qts	0,68
Nominal power	90 W
Short term max power	180 W
Magnet weight	373 g
Total weight of driver	960 g

